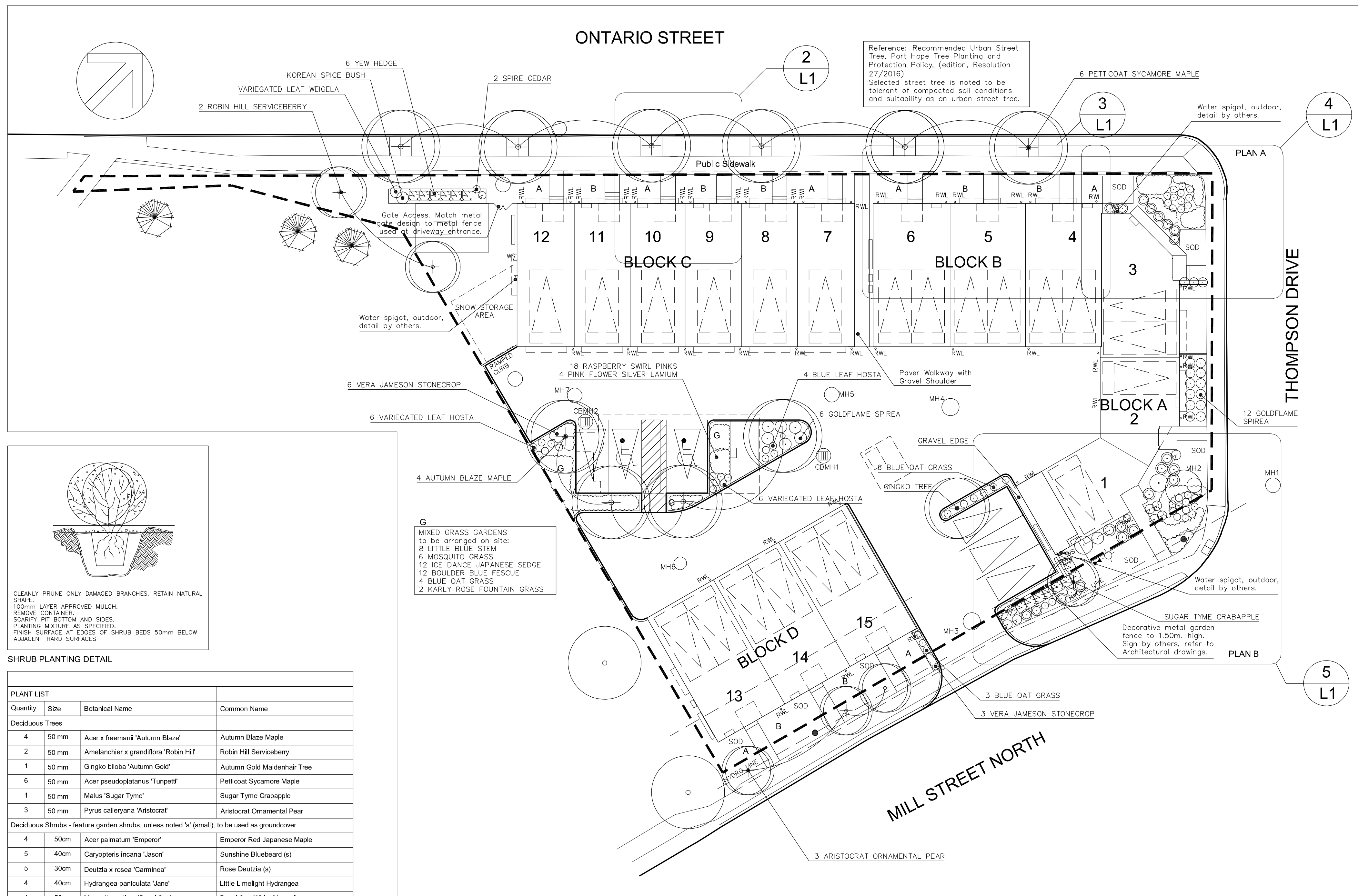
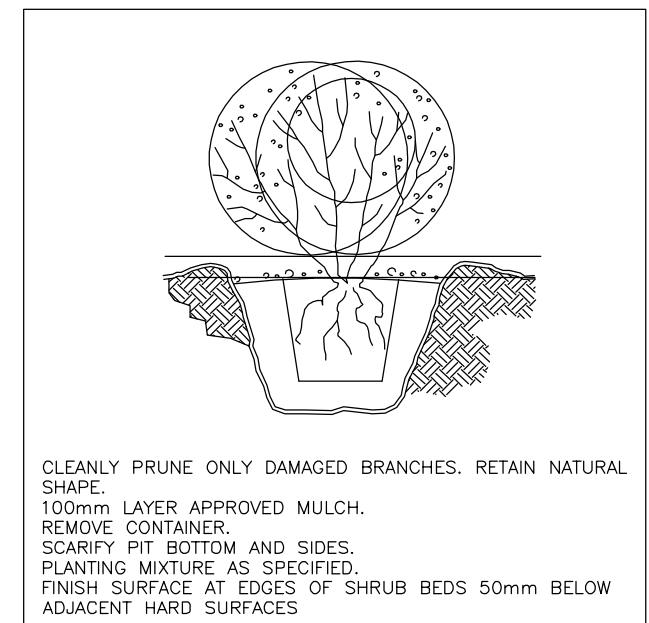


ONTARIO STREET



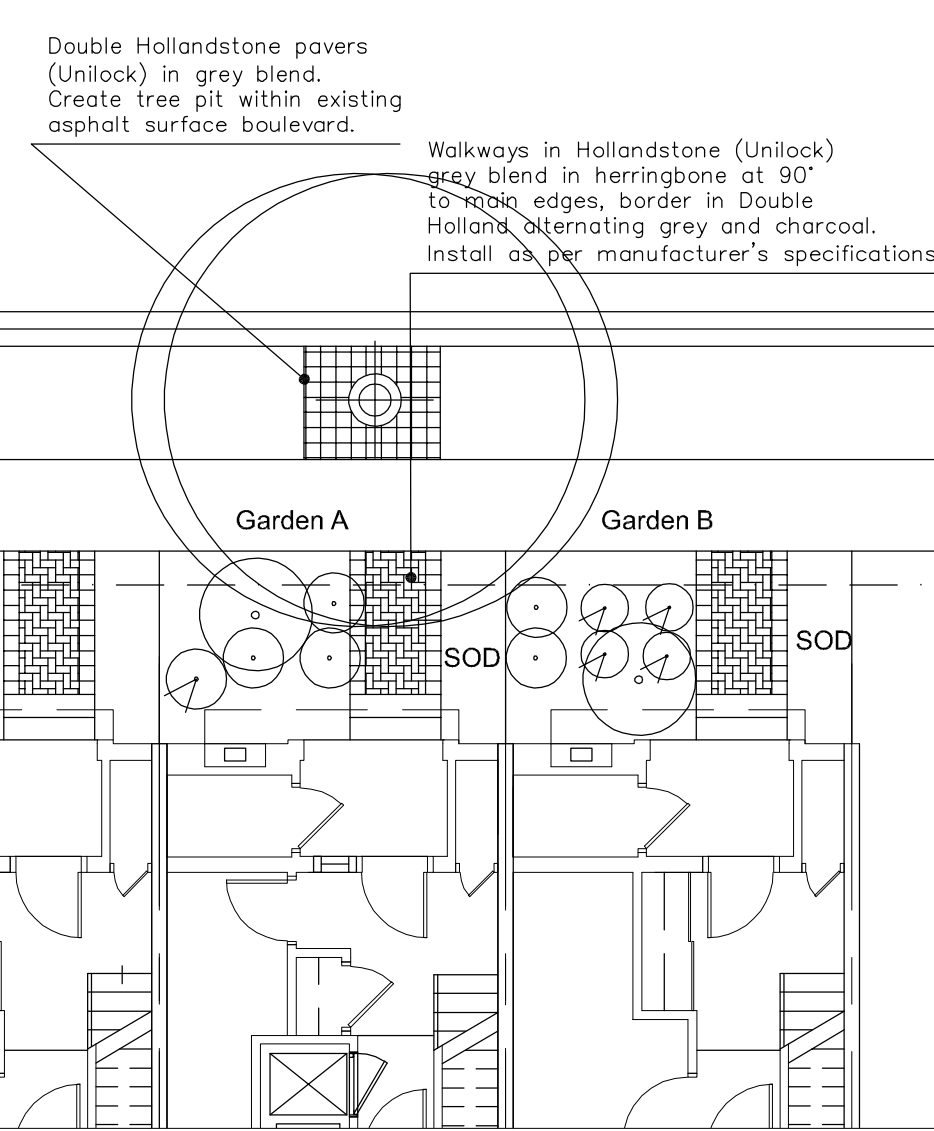
Reference: Recommended Urban Street Tree, Port Hope Tree Planting and Protection Policy, (edition, Resolution 27/2016)  
 Selected street tree is noted to be tolerant of compacted soil conditions and suitability as an urban street tree.



SHRUB PLANTING DETAIL

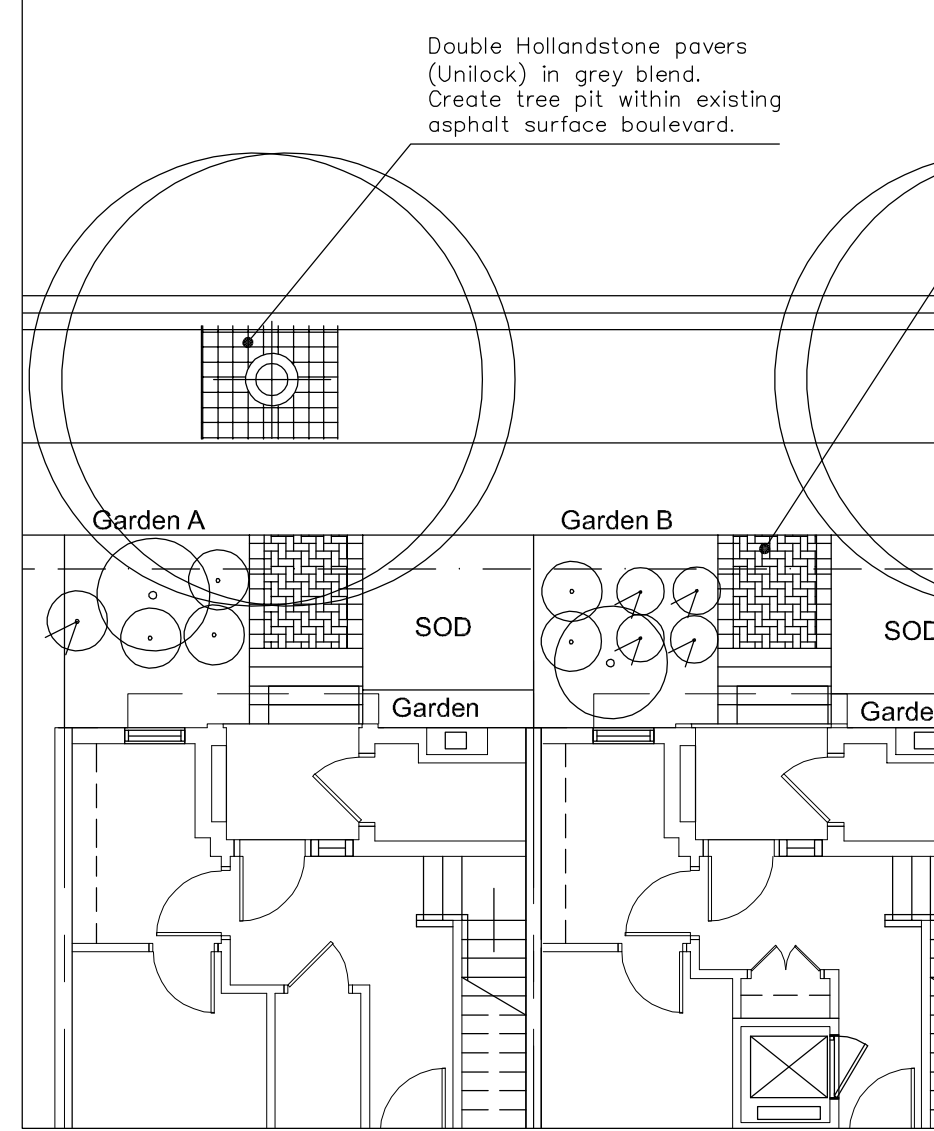
| Quantity   | Size  | Botanical Name                            | Common Name                 |
|--|-------|---|-----------------------------|
| <b>Deciduous Trees</b>   |       |   |                             |
| 4  | 50 mm | Acer x freemanii 'Autumn Blaze'           | Autumn Blaze Maple          |
| 2  | 50 mm | Amelanchier x grandiflora 'Robin Hill'    | Robin Hill Serviceberry     |
| 1  | 50 mm | Ginkgo biloba 'Autumn Gold'               | Autumn Gold Maidenhair Tree |
| 6  | 50 mm | Acer pseudoplatanus 'Tunpelt'             | Petticoat Sycamore Maple    |
| 1  | 50 mm | Malus 'Sugar Tyme'                        | Sugar Tyme Crabapple        |
| 3  | 50 mm | Pyrus calleryana 'Aristocrat'             | Aristocrat Ornamental Pear  |
| <b>Deciduous Shrubs - feature garden shrubs, unless noted 't' (small), to be used as groundcover</b> |       |   |                             |
| 4  | 50cm  | Acer palmatum 'Emperor'                   | Emperor Red Japanese Maple  |
| 5  | 40cm  | Caryopteris incana 'Jason'                | Sunshine Bluebeard (s)      |
| 5  | 30cm  | Deutzia x rosea 'Carmine'                 | Rose Deutzia (s)            |
| 4  | 40cm  | Hydrangea paniculata 'Jane'               | Little Lighthouse Hydrangea |
| 4  | 50cm  | Magnolia stellata 'Royal Star'            | Royal Star White Magnolia   |
| 35   | 30cm  | Rosa polyantha 'The Fairy'                | The Fairy Rose (s)          |
| 13   | 30cm  | Spiraea x bumalda 'Goldflame'             | Goldflame Spiraea (s)       |
| 3  | 40cm  | Weigela florida 'Variegata'               | Variegated Leaf Weigela     |
| 4  | 50cm  | Viburnum carlesii                         | Korean Spice Bush           |
| <b>Coniferous Shrubs - feature unless (s) small, to be used as ground cover or low hedge</b>         |       |   |                             |
| 2  | 50cm  | Chamaecyparis obtusa 'Nana Gracilis'      | Dwarf Hinoki False Cypress  |
| 16   | 30cm  | Juniperus horizontalis 'Plumosa Compacta' | Compact Andorra Juniper (s) |
| 8  | 30cm  | Juniperus procumbens 'Nana'               | Japanese Garden Juniper (s) |
| 12   | 30cm  | Juniperus squamata 'Blue Star'            | Dwarf Blue Star Juniper (s) |
| 4  | 40cm  | Picea pungens 'Glauc Globosa'             | Globe Blue Spruce           |
| 2  | 40cm  | Pinus strobus 'Nana'                      | Dwarf White Pine            |
| 15   | 50cm  | Taxus media 'Densiflormis'                | Dense Hedge Yew (s)         |
| 2  | 120cm | Thuja occidentalis 'Degroot's Spire'      | Degroot's Spire Cedar       |
| <b>Broadleaf Evergreen Shrubs - all (s)</b>  |       |   |                             |
| 7  | 40cm  | Euonymus fortunei 'Emerald Gaiety'        | Emerald Gaiety Euonymus     |
| 14   | 40cm  | Euonymus fortunei 'Country Gold'          | Country Gold Euonymus       |
| 8  | 40cm  | Ilex glabra 'Compacta'                    | Compact Inkberry Holly      |
| <b>Ornamental Grasses - 30cm Pots</b>  |       |   |                             |
| 6  |       | Andropogon scoparius                      | Little Blue Stem            |
| 12   |       | Bouteloua gracilis                        | Mosquito Grass              |
| 12   |       | Carex morrowii 'Ice Dance'                | Ice Dance Japanese Sedge    |
| 13   |       | Festuca glauca 'Boulder Blue'             | Boulder Blue Fescue         |
| 4  |       | Helictotichon sempervirens                | Blue Oat Grass              |
| 4  |       | Pennisetum orientale 'Karly Rose'         | Karly Rose Fountain Grass   |
| <b>Perennials - used as ground cover, typically groups of three - 20cm Pots</b>                      |       |   |                             |
| 8  |       | Dianthus 'Raspberry Swirl'                | Raspberry Swirl Pinks       |
| 20   |       | Heuchera 'Caramel'                        | Caramel Coral Bells         |
| 18   |       | Heuchera 'Obsidian'                       | Obsidian Purple Bells       |
| 10   |       | Knausia macedonia 'Mars Midget'           | Mars Midget Knausia         |
| 4  |       | Lamium maculatum 'Beacon Silver'          | Pink Flower Silver Lamium   |
| 12   |       | Hosta 'Liberty'                           | Variegated Leaf Hosta       |
| 5  |       | Hosta 'Big Daddy'                         | Blue Leaf Hosta             |
| 24   |       | Sedum 'Vera Jameson'                      | Vera Jameson Stonecrop      |

1 LANDSCAPE PLAN 1:200

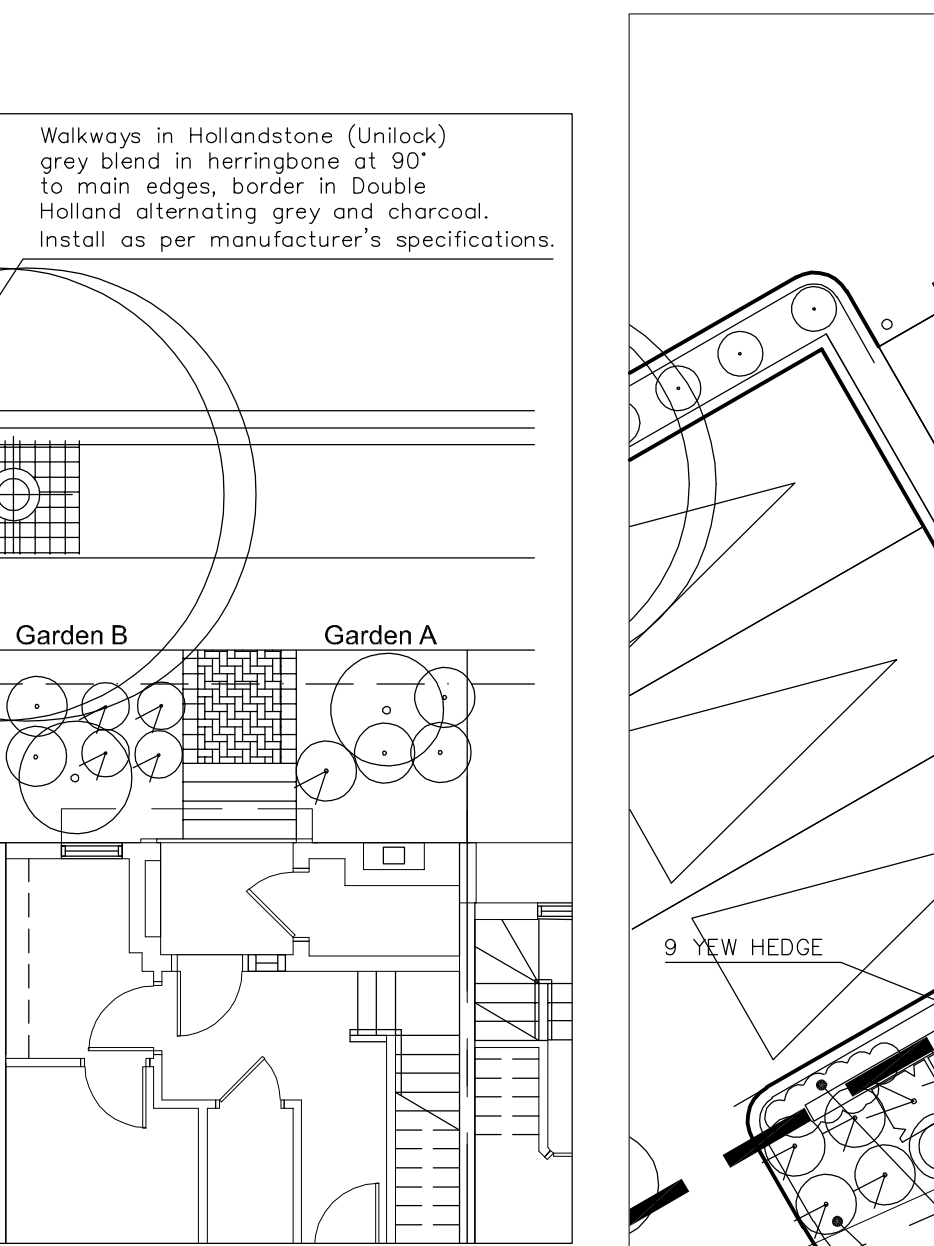


2 DETAIL PLAN GARDEN TEMPLATE 1:100

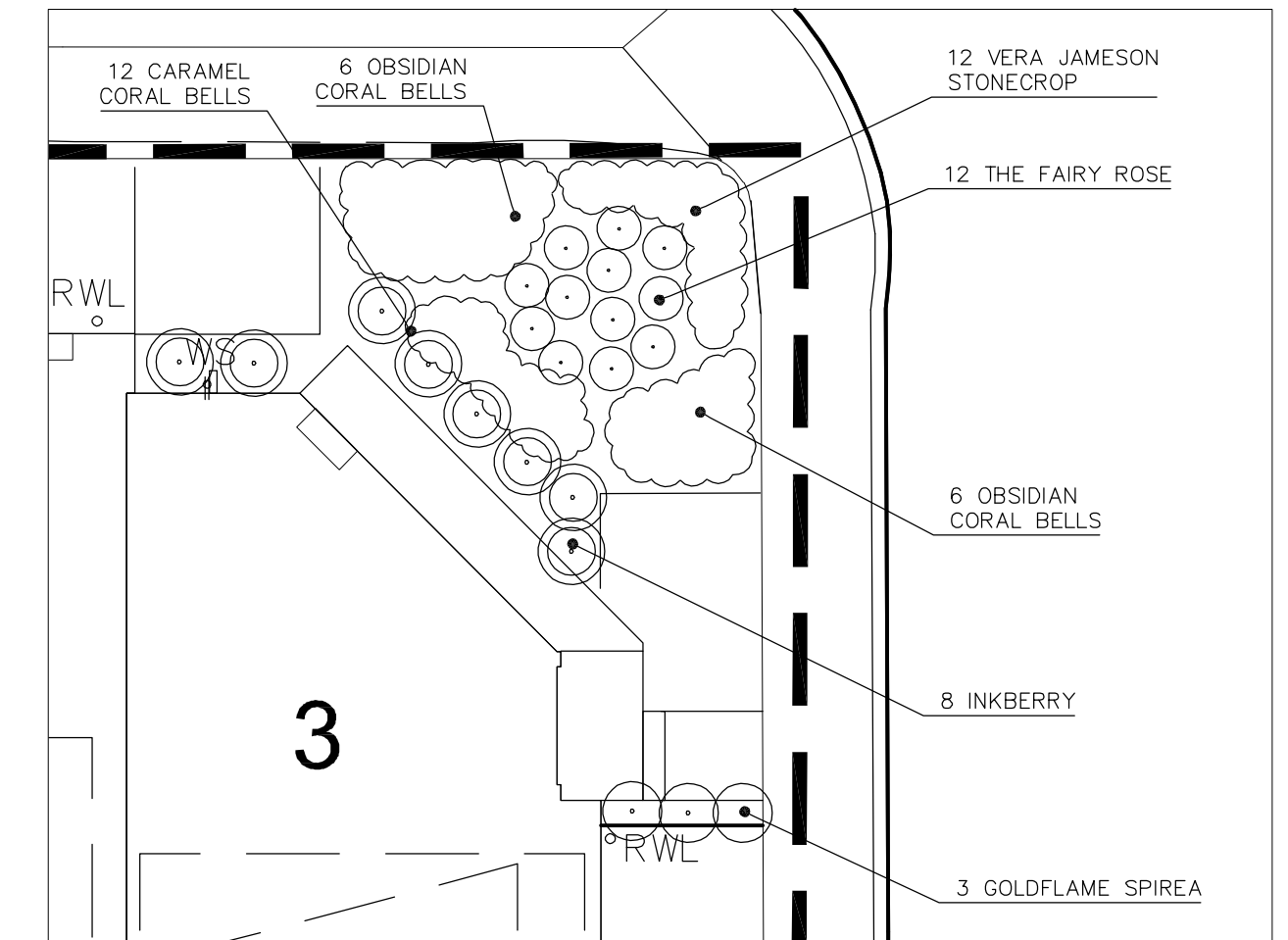
3 DETAIL PLAN GARDEN TEMPLATE 1:100



3 DETAIL PLAN GARDEN TEMPLATE 1:100



3 DETAIL PLAN GARDEN TEMPLATE 1:100



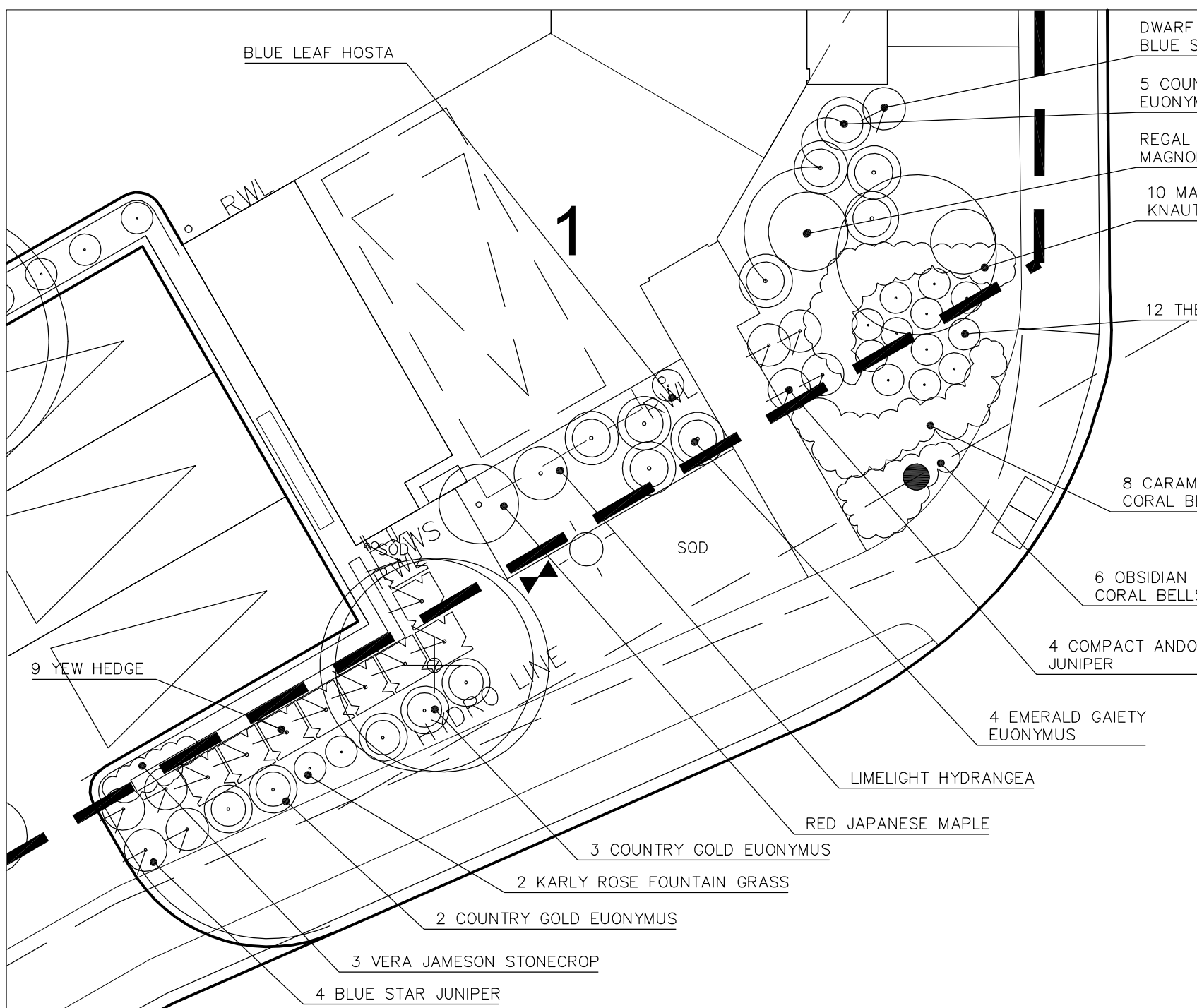
4 DETAIL PLAN A 1:100

**GENERAL LANDSCAPING NOTES**  
 Verify servicing and locate utilities prior to excavation. Confirm site readiness and advise landscape architecture consultant of installation schedule. Verify listed quantities with plan. Report discrepancies immediately. Ensure soil mixture including topsoil is suitable for work. Mark out locations of trees for approval prior to planting. Set out shrubs and ground covers for approval prior to planting. All tree saucers, planters and shrub beds to be mulched. Any rejected material shall be replaced immediately. Ensure adequate watering of plantings to first winter dormancy. Temporary staking to be removed by landscape contractor following acceptance at one year warranty review. Protect existing trees and natural areas to remain. Where there is a discrepancy between drawings and Municipal specifications, the Municipal specifications shall prevail.

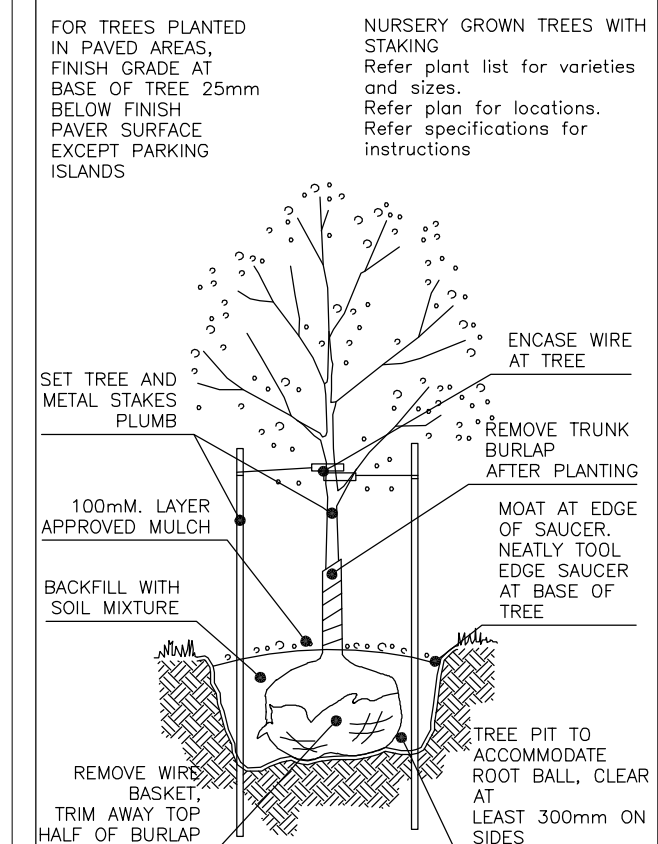
**TREE PLANTING**  
 Select specimen to suit location, setting plant in same level and orientation it grew, i.e. north side of trunk facing north. Set nursery grown plants in planting pit and make minor adjustment to place plant for best appearance from main view. Set tree plumb in pit and coordinate installation to remove rope and wire basket as pit is backfilled, clipping the basket away in pieces without disturbing the tree. Remove at least half burlap covering and fold down remaining burlap to bury in pit. Ensure soil of rootball is moistened to keep rootball from breaking apart during planting. Stake tree to hold in place, refer above, scarify pit bottom and sides. Backfill pit with planting mixture in beds and for individual pits, a mixture of 2 parts soil with 1 part soil specified amendment. Tamp in 150mm layers; water thoroughly to saturate pit and surrounding soil. It is imperative the wire basket be removed and planting technique ensure the establishment of the tree. Stake securely with 2 t-irons set plumb and at equal height. Tie tree to stakes with #9 gauge galvanized wire enclosed in 2-ply rubber hose encircling tree so that no wire is in direct contact with the tree. Ensure wire is securely attached to stakes and twist wire ends to eliminate exposed cuts. Do not pierce root ball with stakes. For deciduous trees, tie tree about height of first main branch. For coniferous trees, tie tree about half height of tree. Trees planted in exposed locations or on slopes may require three stakes, 100mm layer approved mulch such as shredded leaf litter or screened composted manure or dark coloured shredded wood. Burlap wrapping shall be removed for inspection of trunk, and replaced. Install for length of trunk to first main branch. In addition, for trees not planted in beds, provide an approved plastic mowing guard, such as a 200mm length big 'o' boot. For trees which may be susceptible to rodent damage, an approved plastic guard shall be required instead, refer to plant list. Create saucer at base of tree with most edge of tree with mulch edge. Neatly top edge of mulched saucer to create 1m diameter circles at base of tree. Trim only injured plant parts; retaining natural shape. Ensure binding in branches is removed. Damaged or poorly structured plants are unacceptable. Bark damage including loose bark, unhealed wounds and splits in trunk bark is cause for rejection of tree.

**SODDING AND SEEDING**  
 After rough grading is approved and topsoil has been spread and finish graded to depth specified in contract or, a minimum 100mm compacted depth (which ever is more), inspect site readiness for sodding. Dampen soil surface to minimize dust. Respect governing regulations with respect to pollution control. Apply any required fertilizer as determined by contract soil testing and rake into top 100mm topsoil. Roll to consolidate topsoil, leaving smooth and firm against deep footprints. Just prior to sodding or seeding, machine rake soil to scarify surface and eliminate minor irregularities. Sod shall be #1 nursery sod for lawns, uniformly thick and freshly cut. Cultivar blend consistent throughout. Do not use peat based sod supplied with plastic mesh. Lay sod within 36 hours of cutting, store in shade and keep cool until installed. Sod must be set with tight joints which are not visible upon completion. Do not overlap edges. Water sod within one hour of installation to thoroughly saturate sod and top 150mm of soil. Apply water by sprinkler method or similar temporary irrigation method which applies water in a manner which does not displace sod or soil. After sod has dried sufficiently, roll sodded area to ensure a good bond between sod and soil and to remove minor irregularities in the lawn surface. Peg lawn pieces on slopes where necessary. Do not use metal pegs. All sodded and seeded areas are subject to a one year warranty from date of acceptance. Unless noted otherwise, areas are to be sodded.

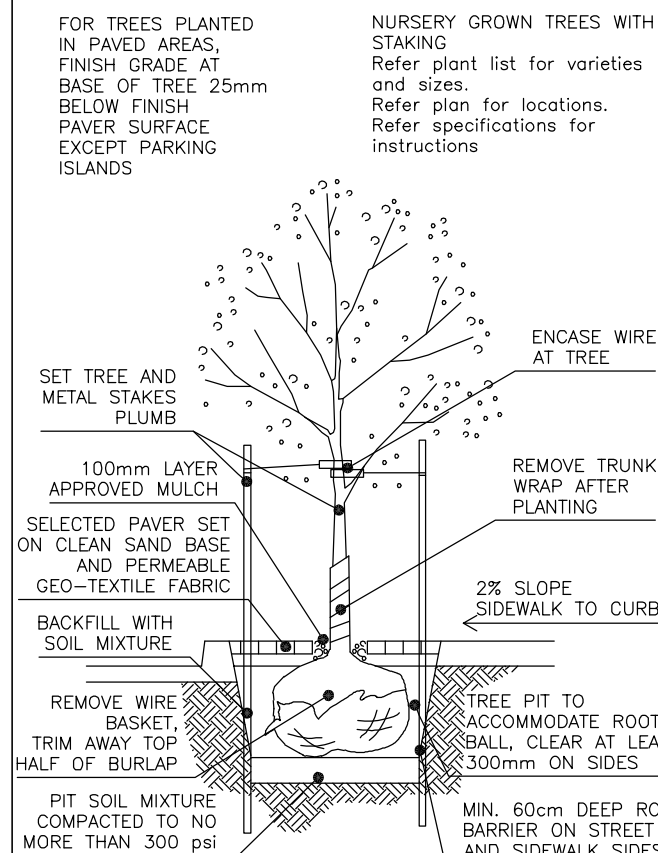
**SHRUB & GROUND COVER PLANTING**  
**PLANTING BEDS AND SOIL MIXTURE**  
 Shrubs and ground covers, to be contained in a continuous bed. Planting beds to be neatly set out and tool edged to create a smooth line with lawn. Generally, shrubs to be set out for approval prior to planting and, shrubs set in a line or hedge pattern to be set evenly spaced from edge of planting bed or walkway or curb, minimum 60cm. Soil mixture for planting beds and tree pits to be horticultural quality topsoil free of weeds and grass roots. May be available from stockpile. Topsoil to be blended with aged screened soil amendment such as commercially prepared leaf litter or barnyard manure, 2 parts topsoil and 1 part soil amendment. Prepare planting beds to 45cm depth, crown beds, meet walkway 50mm below finish edge of walk. Remove all containers, plant and create a saucer at the base of each plant to facilitate watering. Water each plant thoroughly prior to placement of mulch. Install approved dark coloured mulch to a depth of 100mm in beds. Provide mulch sample for approval. See mulch notes on planting details.



5 DETAIL PLAN B 1:100



TYPICAL TREE PLANTING IN PAVED AREA



TYPICAL TREE PLANTING IN PAVED AREA

| No. | Revisions         | Date     |
|-----|-------------------|----------|
| 4   | Issued for SPA #3 | 05.14.20 |
| 3   | Issued for SPA #2 | 09.23.19 |
| 2   | Issued for SPA    | 07.10.19 |
| 1   | Issued for SPA    | 06.07.18 |



All dimensions to be checked and verified on the job. Any discrepancies are to be reported to the Consultant. All drawings remain the property of the Consultant. Only latest approved drawings to be used for construction.

Miriam L.R. Mutton  
 OALA CSLA  
 Landscape Architect  
 Cobourg, Ontario  
 (905) 372-1151

Project  
**ONE THOMPSON**  
 ONTARIO STREET AND THOMPSON DRIVE  
 PORT HOPE, ONTARIO

Drawing Title  
**LANDSCAPE PLAN**

| Drawn   | SR         | Project No. |
|---------|------------|-------------|
| Checked | MM         | Drawing No. |
| Date    | March 2018 |             |
| Scale   | AS NOTED   |             |

L1